

**STROM<sup>®</sup> 2.0** *br10vs*



**Power  
Precision  
Performance**  
*Energy solutions for all*

POWERED BY  
**ARM CORE**



## INTEGRATED ENERGY SOLUTIONS FOR ALL SURGICAL SPECIALTIES

Strom® 2.0 series is an advanced electrosurgery unit (ESO) embedded with Smart Tissue Sensing Technology and powered by ARM Core processor.

### SMART TISSUE SENSING TECHNOLOGY

Constantly monitors tissue impedance to control energy delivery producing the desired tissue effect. This technology dynamically varies the High Frequency current and Voltage leading to enhanced performance using low power settings. The result is reduced tissue damage and faster recovery.

#### 1. PRECISE POWER DELIVERY

Build in core allows rapid processing of tissue impedance resulting accurate power delivery.

#### 2. ADVANCED ALGORITHM BASED CONTROLS

Allows continuous control of various electrical parameters of generator based on continuous information processing from surgical site.

#### 3. DYNAMIC TISSUE SENSING

Improved closed loop control circuitry and precise calibration enables faster real time computation of electrical properties of tissue resulting in regulated power output.

### ARM CORE CHIP

ARM Core Chip: The ARM architecture processor is an advanced Reduced Instruction Set Computing [RISC] Machine, considered the most efficient processing unit available.

### PRECQM

PRECQM Technology, makes our systems very safe, measuring the "Patient contact with patient plate" and cutting the power delivery the moment contact between the patient plate & Patient goes below 50%. Our product is one of the safest ESUs available today.

### LIGATION

STROM® 2.0 provides real time tissue impedance feedback with auto power delivery to efficiently and effectively seal vessels. Multi-step controllers enable our system to be consistent, and ensure that the seal is uniform, flexible and reliable.

### BIPOLAR RESECTION IN SALINE

Strom 2.0 maintains plasma ignition with the lowest possible energy levels.

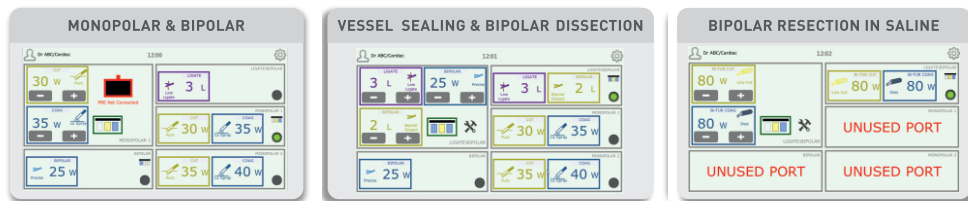
# STROM<sup>®</sup> 2.0 *br10vs*

AUTO LOCK  
TOUCHSCREEN

PROGRAMMABLE  
USER PROFILES



## SIMPLIFIED USER INTERFACE



## BIPOLAR DISSECT

STROM<sup>®</sup> 2.0 offers the safest dissection feature called bipolar cut. This feature enables clinicians to dissect tissue using the safest form of bipolar energy. This provides convenience of use in surgeries requiring dissection and reduces instruments, exchange.

## SIMULTANEOUS MONOPOLAR COAGULATION

STROM<sup>®</sup> 2.0 offers simultaneous monopolar coagulation feature which enables users to get power from 2 monopolar outputs at the same time when required.

## INTUITIVE BIPOLAR

STROM<sup>®</sup> 2.0 unique algorithm controls bipolar energy generation making it truly intuitive in term of power delivery. STST enhances the waveform for precise energy delivery. This unique algorithm is the backbone of AUTO START and AUTO STOP.

**AUTO START:** Automatically delivers the desired power only after sensing the tissue within the jaws of the instrument.

**AUTO STOP:** Automatically cut power after sensing certain tissue impedance absence within the jaws of the instrument.

## BIPOLAR RESECTION IN SALINE

Bipolar resection in saline modality is enabled with proprietary **PLASMAPRO™ technology**, it is an **algorithm-based technology** leading to continuous plasma ignition. This technology reduces operating temperature resulting in, less thermal spread.

PLASMA RESECTION

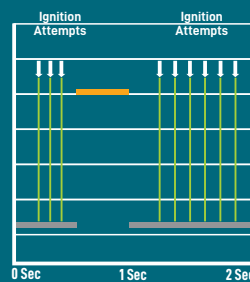
PLASMA VAPORIZATION

PLASMA ENUCLEATION

### ZERO ACTIVATION LAG

Large Capacitor based modern hardware Architecture with advanced **PLASMAPRO™** proprietary algorithms helps in creating plasma instantaneously.

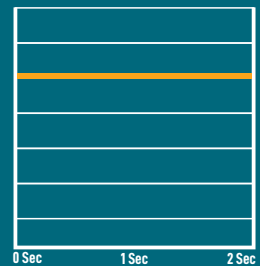
#### COMPARATIVE UNIT



■ NO PLASMA



#### STROM 2.0 br10vs



■ PLASMA

## Cutting effect Under saline :

For cutting effect we offer unique modes focussing various procedural requirements. **Low cut** modes offers shallower vaporization as per the procedural requirement.

**High cut** mode offers 3 variants based on the level of ENUCLEATION required in the procedure. **Effect** mode offers combination of cutting effect and coagulation effect depending upon the procedural requirement.

## Coagulation Effect under saline :

Charring slows post operative recovery. Our two coagulation modes, **Desiccate** and **Force** produce reliable coagulation and reduced charring. Both modes offers different hemostatic effect based on the type of tissue and procedural requirement.

With resection loops in different sizes and shapes, needle and band electrodes, oval and vaporization buttons and a special enucleation loop, APOGEE's **PLASMAPRO™** electrodes offer complete range of options.

### STROM® 2.0 SURGICAL PLATFORM ASSURES

- Optimum vaporisation volume
- Optimum resection volume
- Maximum precision and control



## PERMANENT VESSEL FUSION

Permanent vessel fusion up to 7mm diameter can be achieved through Unique combination of optimum Energy and accurate Pressure.

Optimum Energy management for Permanent vessel fusion is achieved through proprietary **Closed-loop vessel fusion algorithm** which senses vessel Impedance and adjusts output voltage, current, and generator power in real time.

LIGAPRO® VS is a proprietary Vessel fusion technology with cold blade dissection. It works on the principle of applying optimum temperature & uniform pressure on the vessel between the jaws for achieving permanent vessel fusion.

### What is LIGAPRO® VS technology?

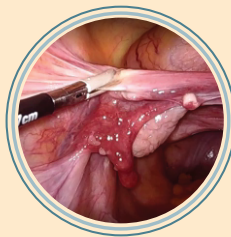
LIGAPRO® VS vessel-sealing technology uses the body's own collagen and elastin to create a permanent seal that can with stand burst pressure three times normal systolic blood pressure. Designed, Developed & Manufactured 100% by WINGLOBE.

### What does it do?

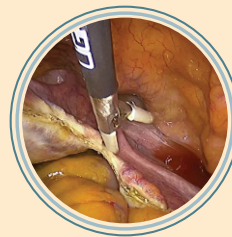
Upon activation sealing cycle get completed in few seconds [2 to 4 sec] in most surgical situations.

- Vessels up to and including 7 mm
- Lymphatics
- Tissue bundles

This technology totally eliminates the guesswork with a feedback-controlled response system that automatically discontinues energy delivery when the seal cycle is complete.



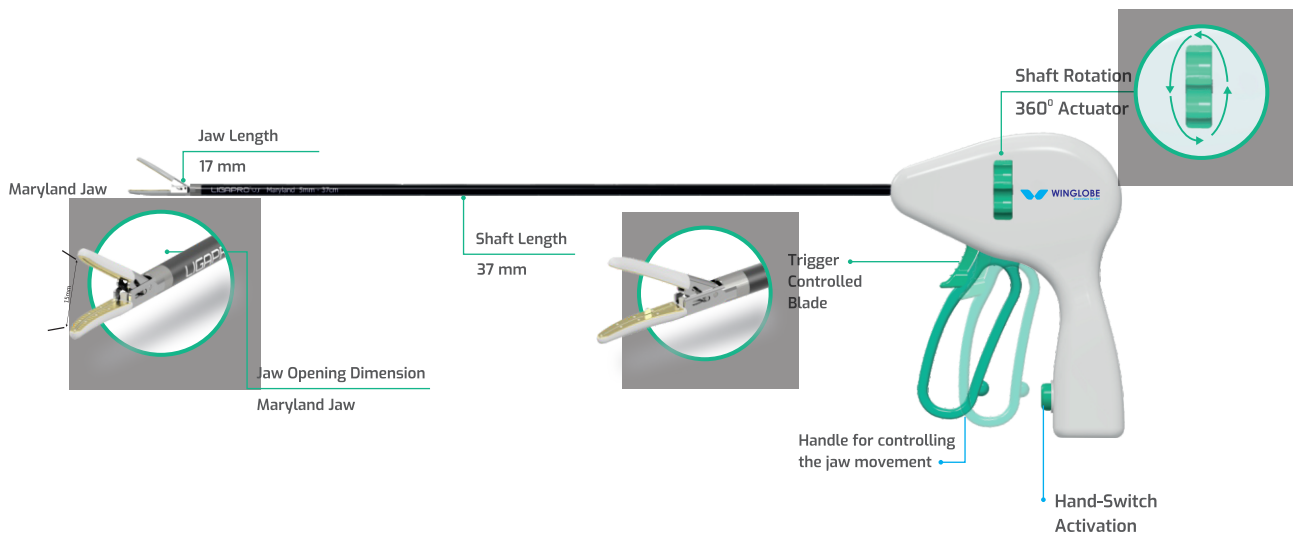
Sealing Quality



Tissue Transection



Thermal Spread



1



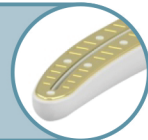
#### Spring controlled Jaw Pressure

Critical for achieving **Assured Permanent Vessel Sealing**.

2

#### Microblockers

Provides uniform pressure distribution across the jaw leading to **Assured Permanent Vessel Sealing**.



3

#### Proprietary coating on active plates

Assures uniform heat distribution & rapid cooling of the active plates after completion of Sealing Cycle resulting in **Lower Jaw Temperature Profile**.

4

#### Unique multilayered jaw construction & material.

Minimal smoke, no charring, no sticking & **Controlled Thermal Spread**.

5



#### Protective coat on outer surface of jaw

Ensures that only the active plate is heated & rest of the jaw is protected thereby preventing **Inadvertent Thermal Damage**.

6

#### Trigger controlled cold blade

Which travels between the jaw is designed for **Cutting Sealed Vessels Only**.



**Apogee Medical, Inc.**

282 South Street Blue Hill, ME 04614 USA

**+1-207-266-7195**

[info@apogeemedicalinc.com](mailto:info@apogeemedicalinc.com)

[apogeemedicalinc.com](http://apogeemedicalinc.com)